



ABEN
RESOURCES LTD.

Pringle North Property Overview

Red Lake, Ontario

Aben Resources Ltd. – July 2021

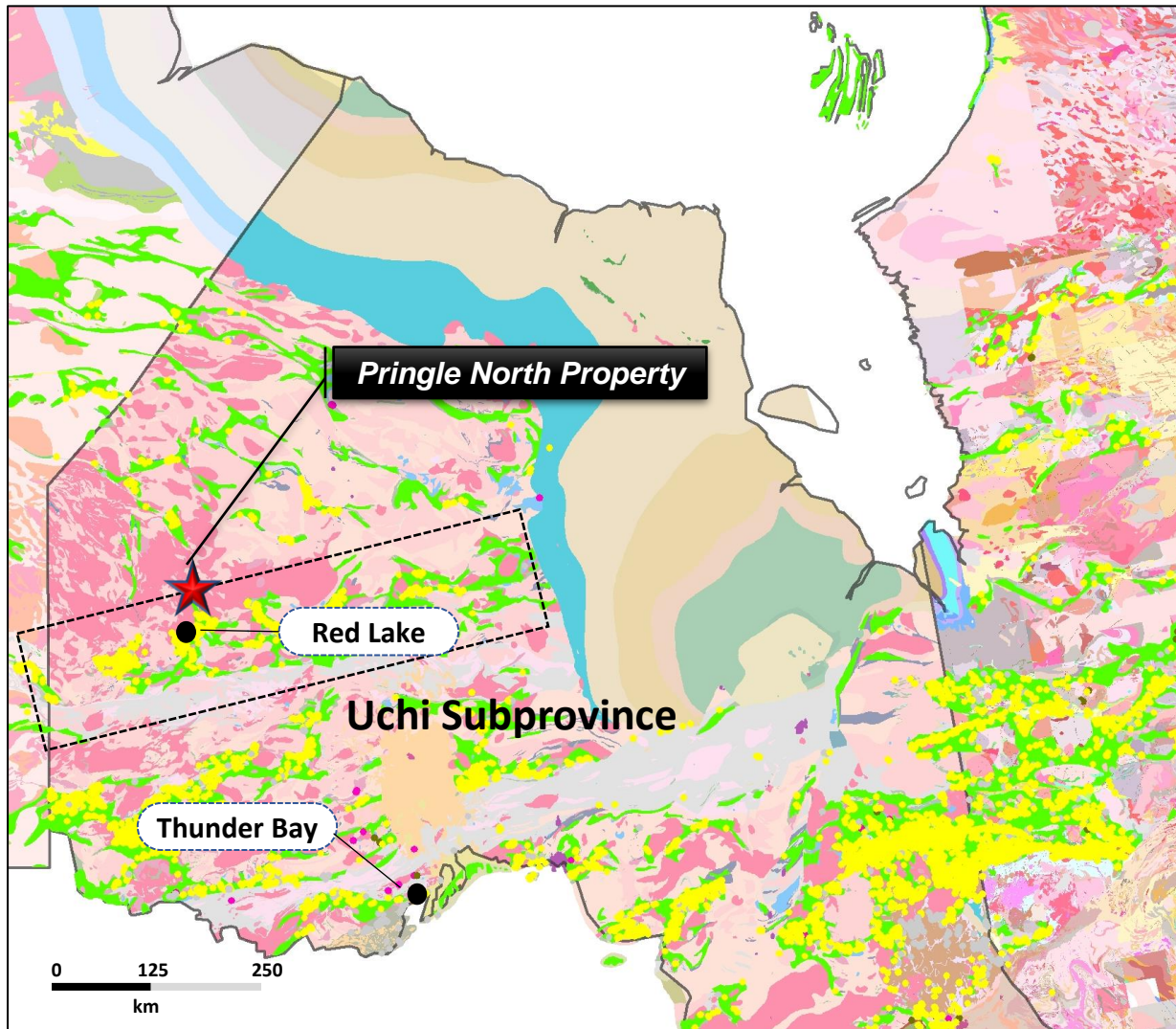
Property Summary

- The Pringle North property consists of 5 contiguous mining claims covering approximately 1,881 hectares.
- The property is 60 km north of the town of Red Lake and located 15km east of the all-weather Nungesser Road.
- The area has been recommended by the MNDM Recommendations for Exploration 2020-2021 for its deep-seated structural similarities that are associated with the Red Lake Gold Camp and the Great Bear Resources Dixie Project.
- Age determination by Sanborn et al. (2004) dates the volcanic-sedimentary belt at 2.94Ga and assigns it to the Balmer Assemblage. This is significant as the Balmer hosts the majority of the major gold mines in the Red Lake camp.
- Several till samples on the property in a large program conducted by Agnico Eagle in 2009 >95th percentile in anomalous gold with some >99th percentile.
- Very little systematic exploration on the property however new structural insight provides excellent potential.

Regional Location



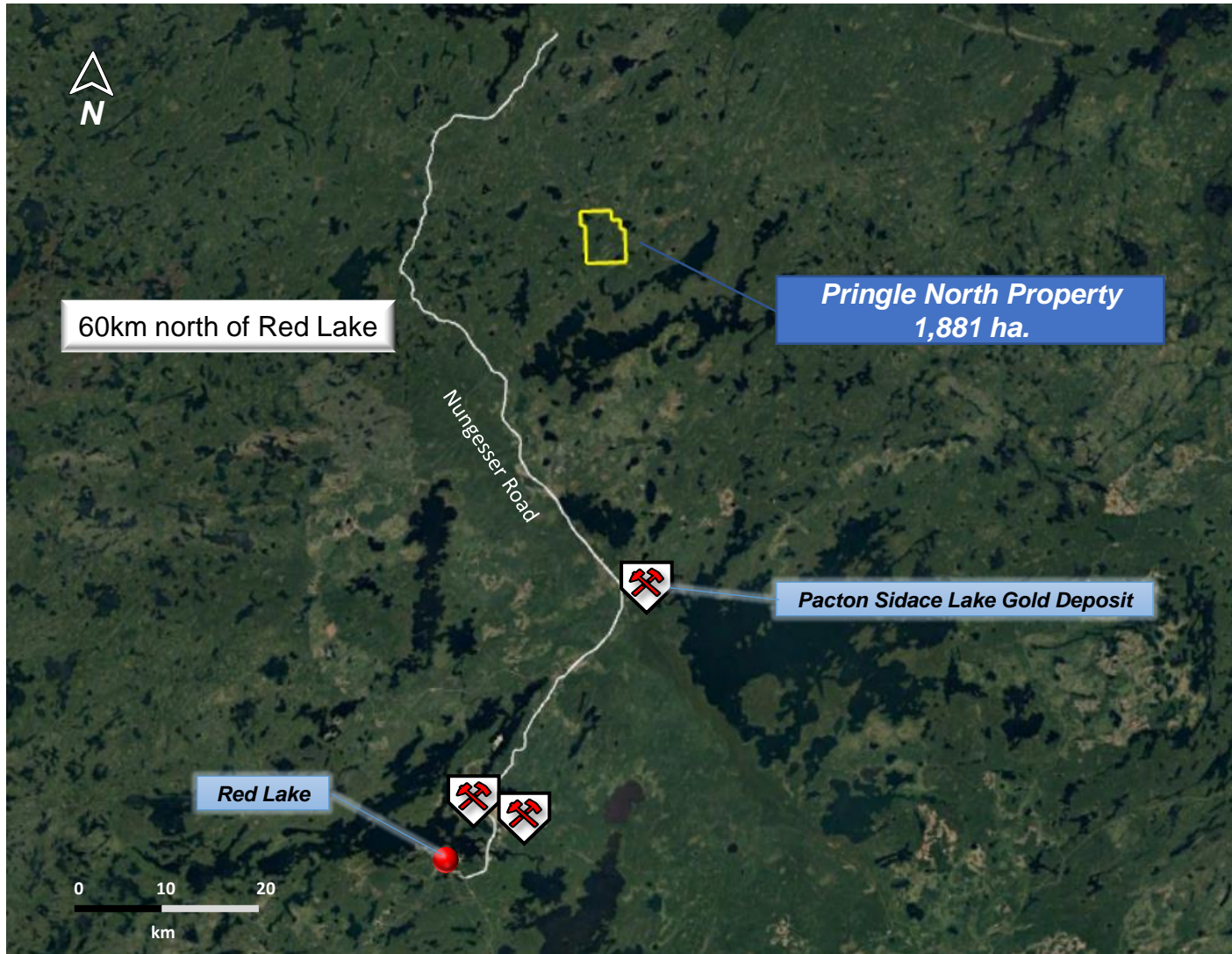
Metal Occurrences of the Superior Province



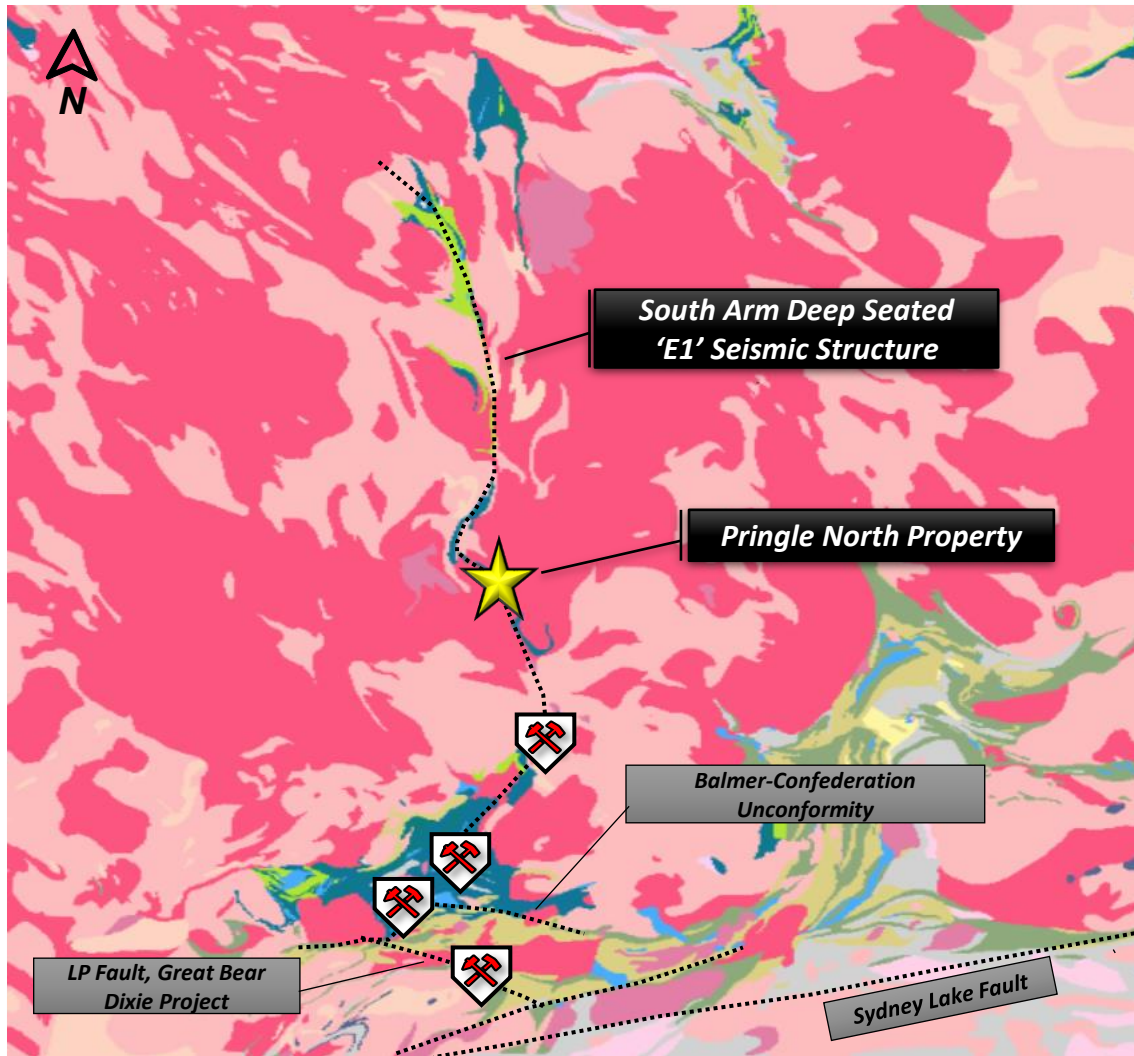
- The Pringle North Property is situated within the prolific Uchi Subprovince. It is one of the most metal endowed greenstone belts in the world by square kilometer.

● Precious Metal Occurrences of Ontario/Quebec

Regional Location and Access

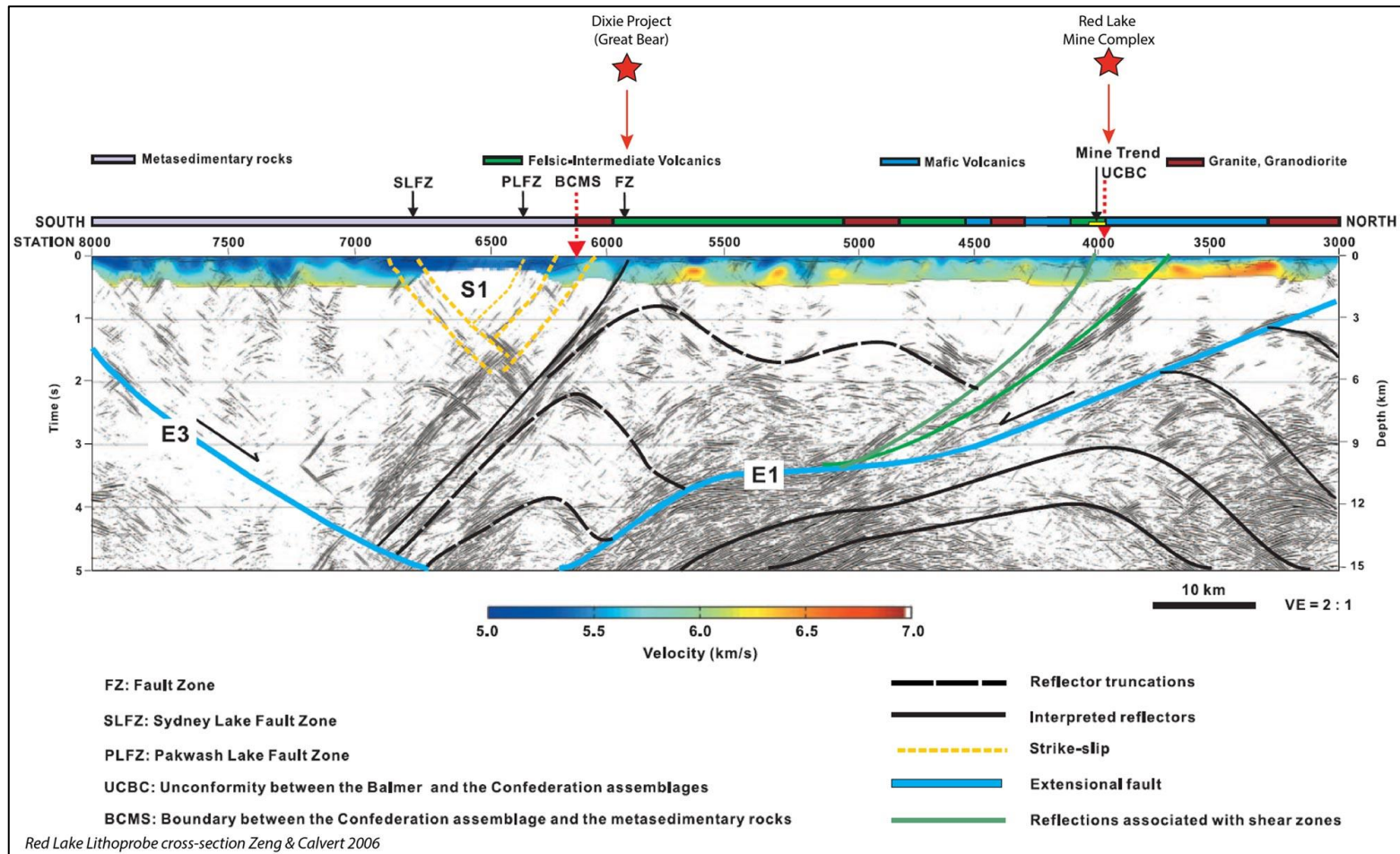


Regional Geology and Structure



- Like the Balmer-Confederation unconformity of the Red Lake Gold Camp and the LP Fault of the Great Bear Resources Dixie Project, the South Arm structure is a recognized third deep seated tapping seismic structure.
- The Red Lake gold district hosts several gold mines and exploration projects that sit at or near these deep-tapping seismic structures.

Seismic related structure of the Red Lake gold district mines



- The 'E1' extensional fault is considered a third deep-tapping seismic structure that has provided fluid pathways for gold mineralization at the Dixie Project and the gold mines of Red Lake.

Source: MNDM Recommendations for Exploration 2021 <https://www.mndm.gov.on.ca/en/news/mines-and-minerals/recommendations-exploration-2020-2021>

A recognized third deep tapping seismic- South Arm

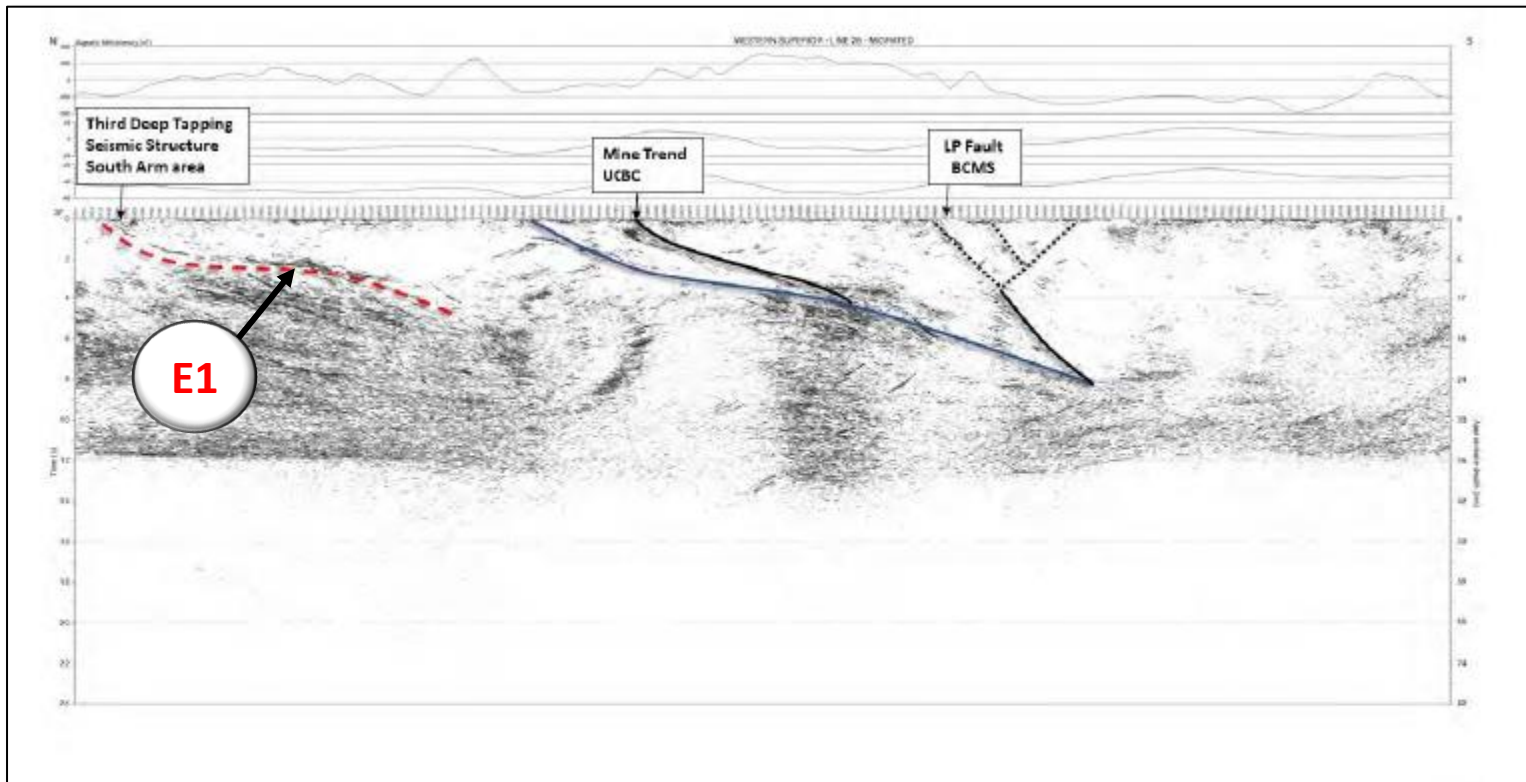
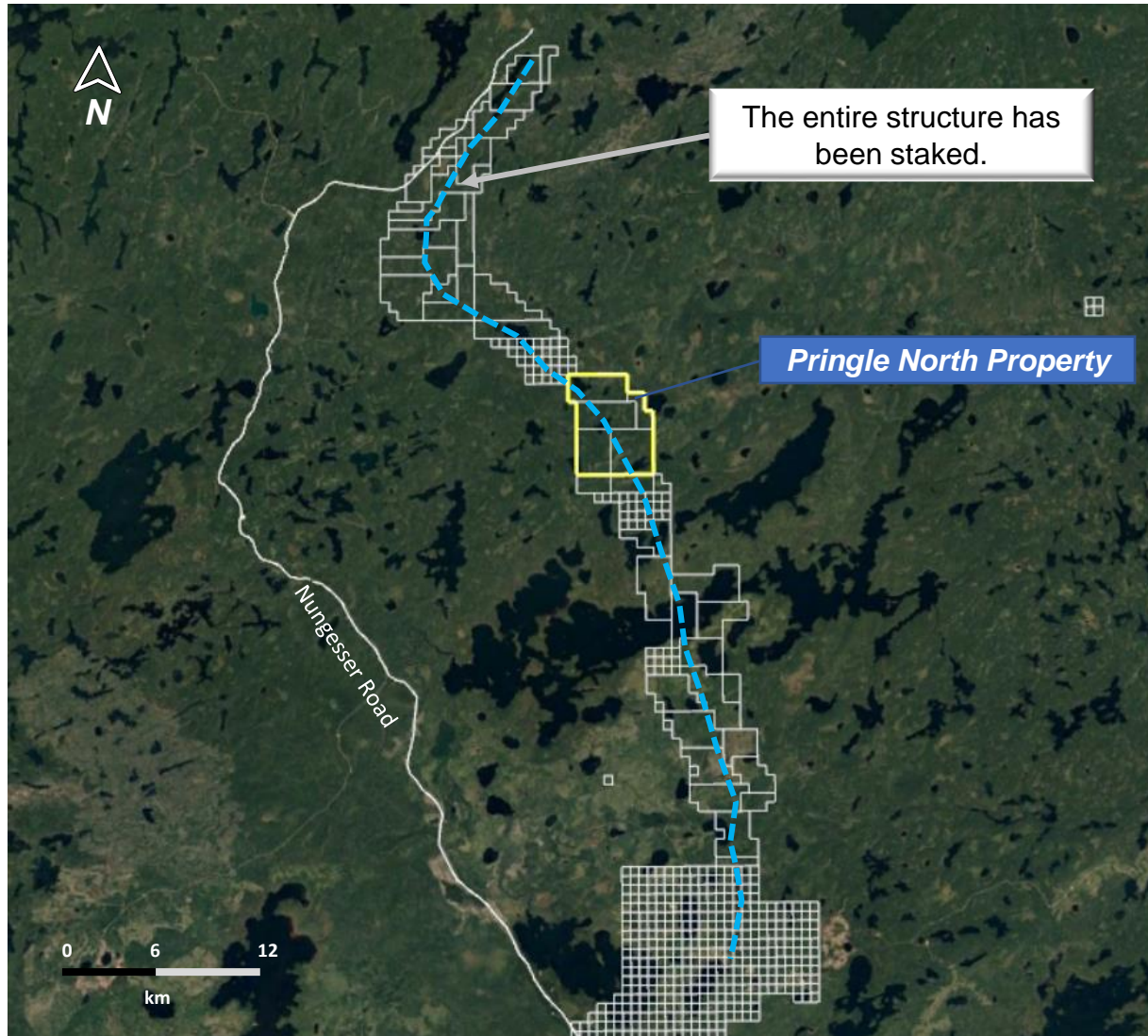
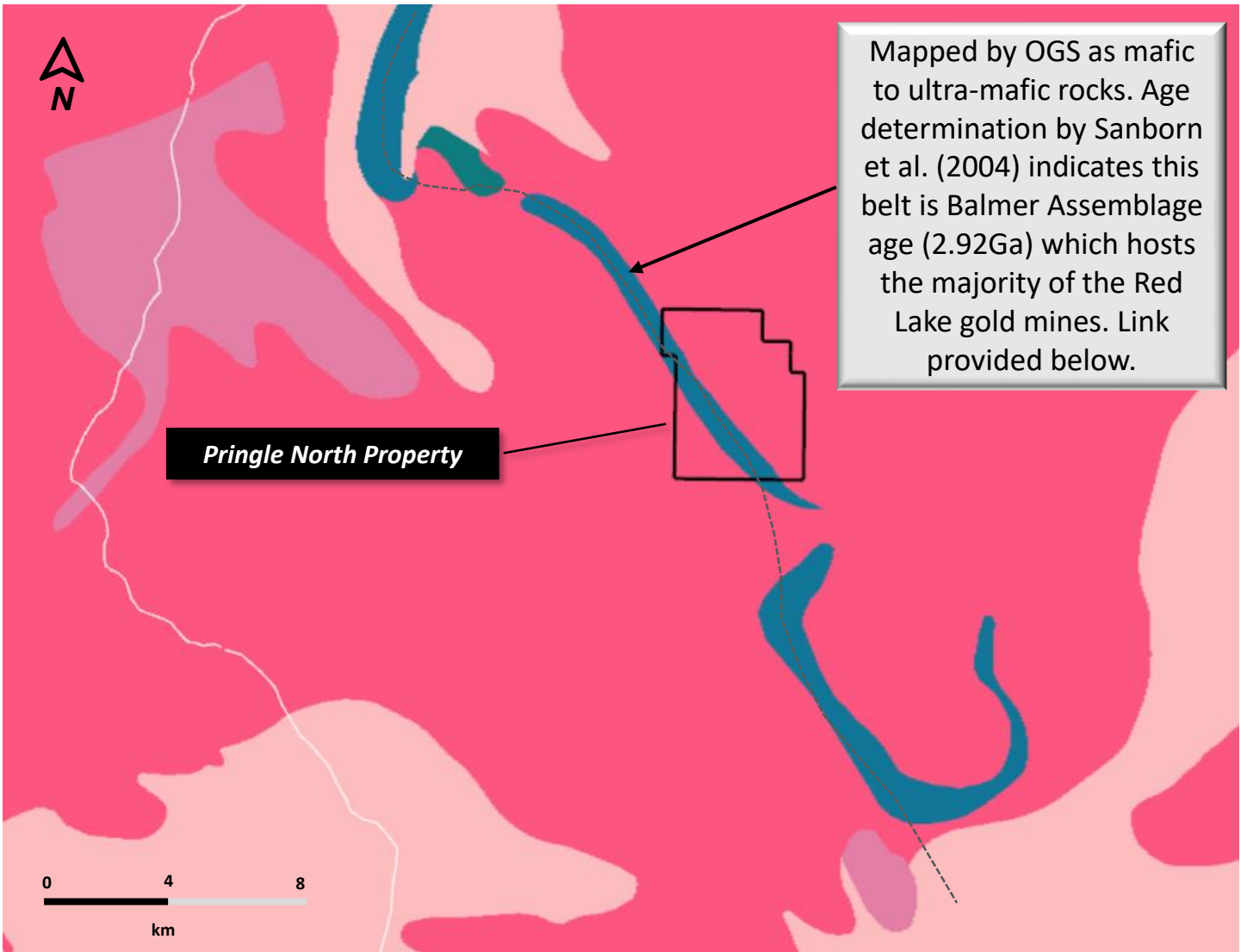


Figure 3. Original uninterpreted seismic survey of the Western Superior Line 2b with features added from Zeng and Calvert (2011). The blue solid line is the extensional fault identified as "E1" from Zeng and Calvert (2011). The solid and dashed black lines are the seismic faults. UCBC—Unconformity between Confederation and Balmer assemblages. BCMS—Boundary between Confederation rocks and metasedimentary rocks. Note that the UCBC and BCMS sit at or near significant mining or mineral exploration projects, specifically the Red Lake gold mines owned and operated by Evolution Mining Inc., (also known as Mine Trend) and the LP Fault zone owned by Great Bear Resources Ltd. A third deep-tapping seismic structure exists and is identified by the dashed red line and appears to surface near the South Arm area.

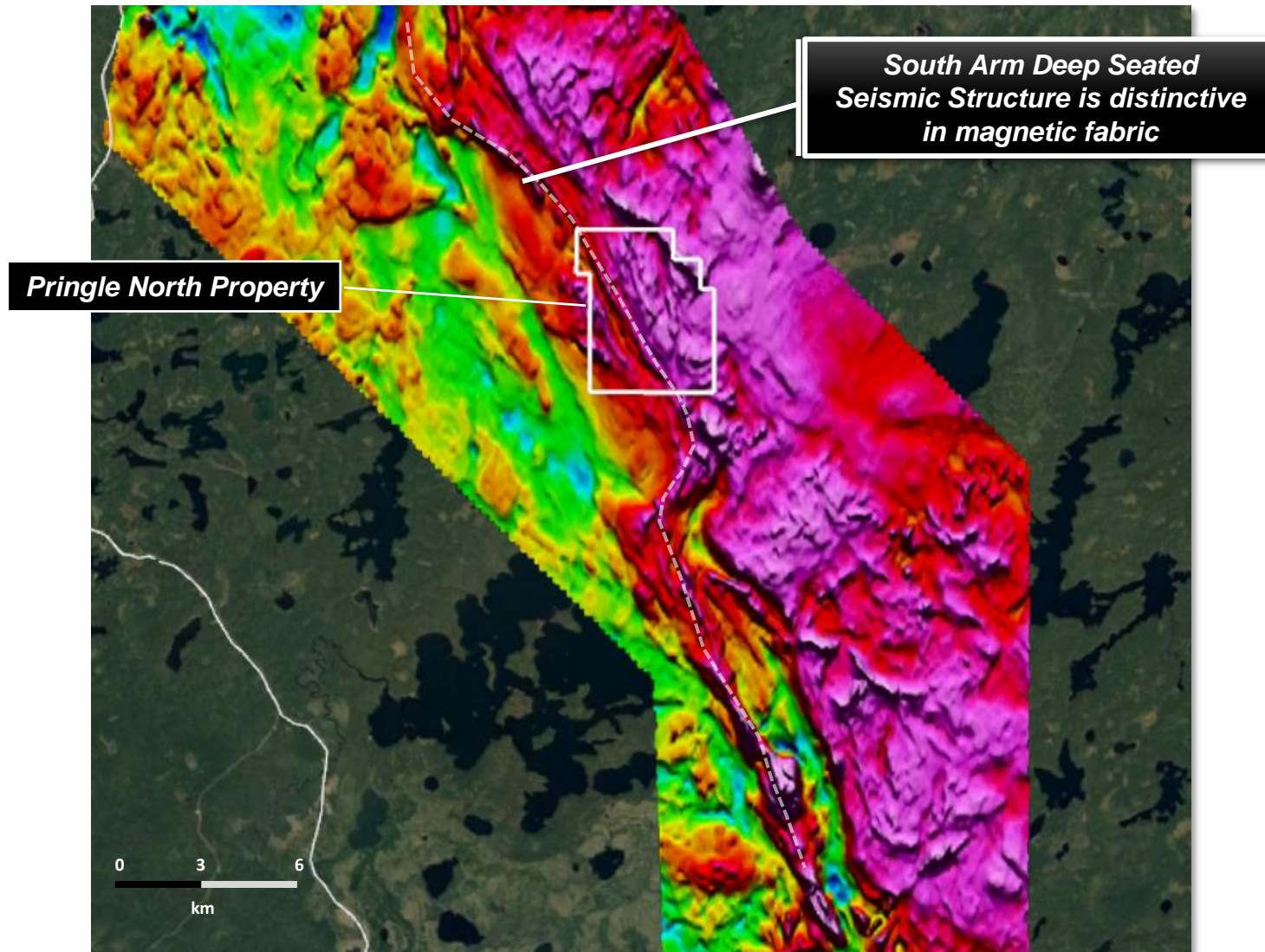
Local Claim Fabric



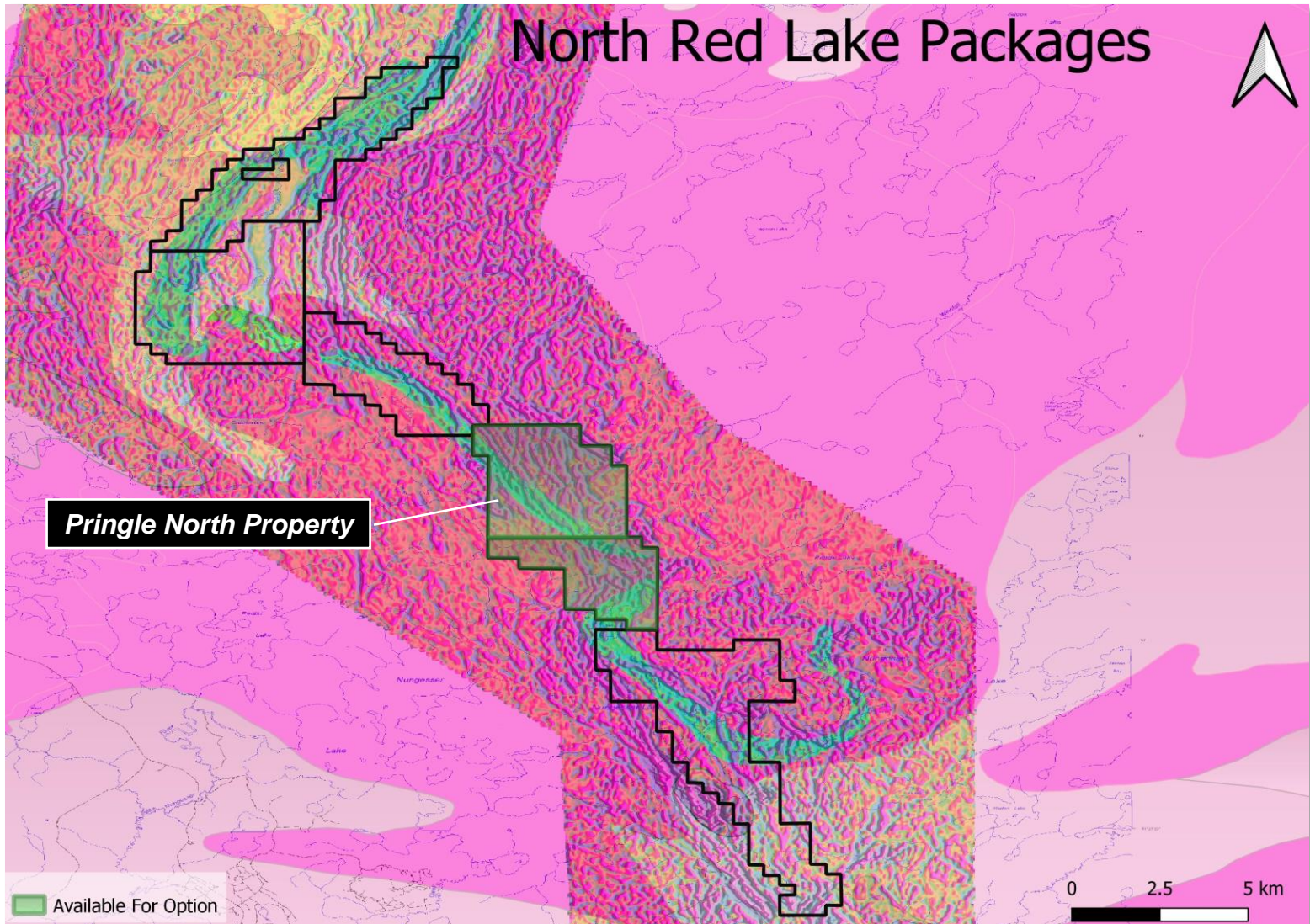
Local Geology



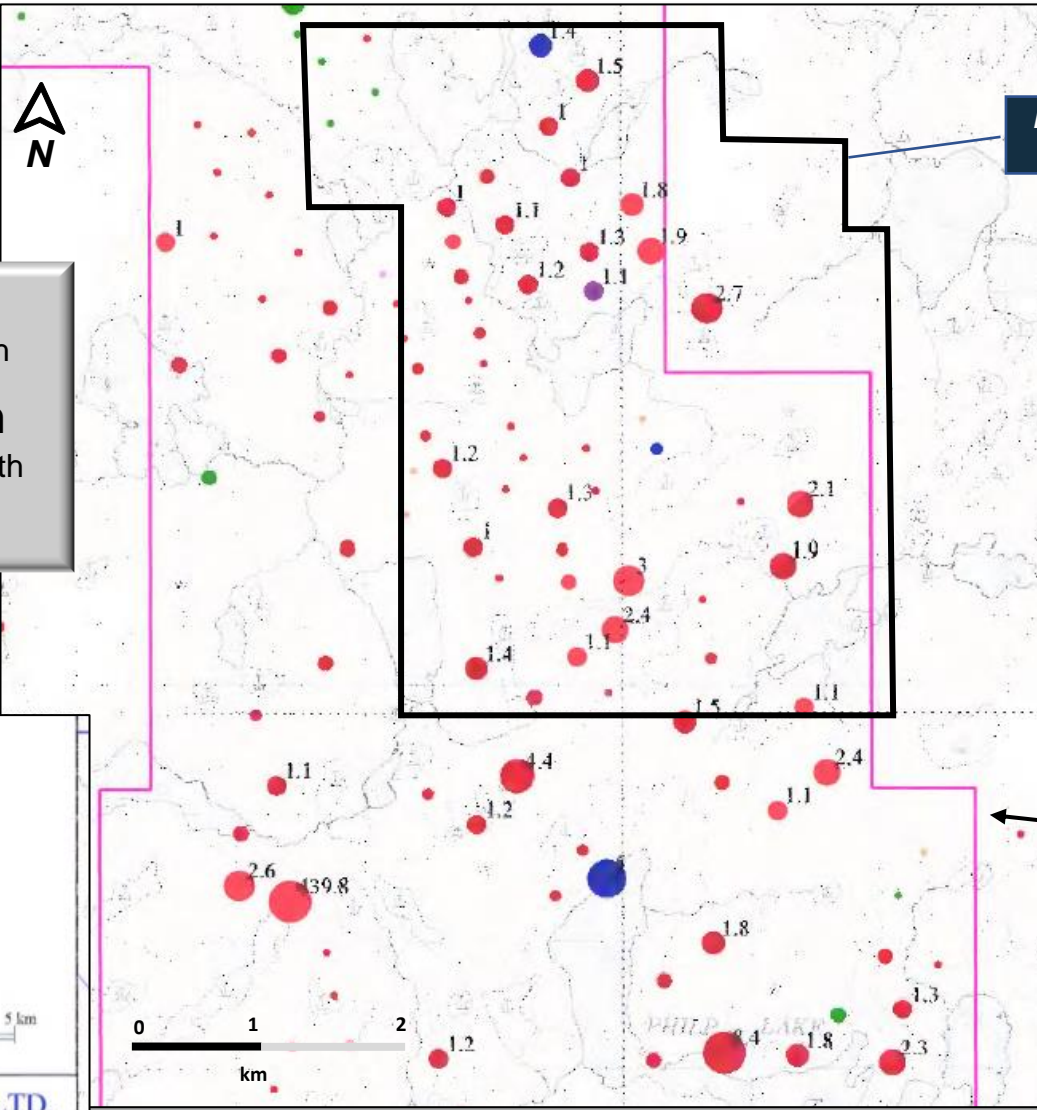
Total Field Magnetism



Magnetic Shadow Plot over Geology



Agnico Eagle Till Sampling, 2009



Pringle North Property approximate

Several till samples > 95th percentile with some in the 99th percentile

Agnico Eagle Sampling Coverage

Gold (ppb)

• < 50 Cent	• < 95 Cent
• < 62 Cent	• < 99 Cent
• < 75 Cent	• < 99.5 Cent
• < 85 Cent	• < 99.5 Cent
• < 92 Cent	• < 99.5 Cent
• < 95 Cent	• < 99.5 Cent

□ Property limits

0 1 2 3 4 5 km
Scale 1 : 50,000

AGNICO-EAGLE CANADA LTD.



ABEN

RESOURCES LTD.

Jim Pettit President & CEO

604-416-2978

1-800-567-8181

info@abenresources.com

Suite 1610 – 777 Dunsmuir Street

Vancouver, British Columbia

Canada, V7Y 1K4

